

Rooflock[®] Eighteen

No-Weld
Flexible
Membrane
System





Rooflock[®] Eighteen

Flat roof waterproofing

EPDM. Strictly regulated. No Exceptions.

Rooflock Eighteen: an extruded EPDM unrivalled in lifespan and jointed without onsite hot-air welding.

Rooflock Eighteen has been specifically developed for the commercial roofing sector as a guaranteed roof system with significantly reduced labour costs.

Approved Contractors only. Jointed with advanced NoWeld technologies.

For in-depth specification details, please consult the [Rooflock Eighteen Design Guide](#).

www.rooflock.com/eighteen

Rooflock® Eighteen

Flat roof waterproofing

Contents

- Rooflock Eighteen membrane page 4
- Rooflock Eighteen NoWeld Jointing and Perimeter Tapes page 6
- Rooflock Eighteen NoWeld Rainwater outlets page 10
- Fastener Systems page 11
- Fastec Termination bars page 12
- Rooflock Eighteen Adhesives page 13
- Rooflock Eighteen Cleaner page 13



Rooflock® Eighteen

Flat roof waterproofing

Page 4

Rooflock Eighteen membrane - Class E Reaction to Fire (EN 13501-1)

No-Weld joints with 40+ year life span – labour saving

A simple and rapid factory-made jointing system saves you on labour costs and removes the ambiguity of onsite welding.

No hot air welding.
No long power cables.
Saves you significant costs.

25 year product warranty

Rooflock Eighteen system has a 25 year product warranty and you can specify with total confidence. The anticipated lifespan is 40+ years.

Class E Reaction to Fire (EN 13501-1)



Regulated – trained installers only with detailed installation specifications

Roofing installations work only if projects are meticulously regulated to ensure correct installation specifications are followed. That is why Rooflock Eighteen is only available to Rooflock Partner Contractors and is never available to DIYers, joiners or online suppliers.

Exclusive – no online suppliers

Rooflock Eighteen is only available to Rooflock Partner Contractors

Extruded – no pin holes (unlike ordinary calendared EPDM)

Modern manufacturing processes remove risk of air pockets or pinholes within the membrane and remove the need for talc on the membrane surface. Extrusion also produces a consistent thickness, which gives a membrane that easily lays flat.

Rooflock® Eighteen

Flat roof waterproofing

Page 5

Rooflock Eighteen membrane - Class E Reaction to Fire (EN 13501-1)

Thickness 1.14mm

Widths: 1200mm
2350mm
3500mm

Roll Length 30m



Rooflock® Eighteen

Flat roof waterproofing

Page 6

Rooflock Eighteen NoWeld Jointing and Perimeter Tapes

Rooflock Eighteen: No-Weld joints with 40+ year life span – labour saving

A simple and rapid factory-made jointing system saves you on labour costs and removes the ambiguity of onsite welding.

No hot air welding.

No long power cables.

Saves you significant costs.

Installation advice:

All Rooflock Eighteen NoWeld products **must** be used with Rooflock Eighteen NoWeld Surface Activator – see page 8.

For chalky membranes, either a solvent wipe must be used to remove the chalk, or the Surface Activator must be applied with a scrubber pad to lightly abrade the surface of the EPDM.

Rooflock Eighteen NoWeld Cover Tape

Rooflock Eighteen NoWeld Cover Tape is a semi-rigid EPDM membrane, laminated to a high-performance EPDM-based pressure-sensitive adhesive. For use at overlaps and seams within mechanically fixed specifications.

Width: 150mm
300mm

Length: 15m

Must be used with Rooflock Eighteen NoWeld Surface Activator – see page 8



For in-depth specification details, please consult the [Rooflock Eighteen Design Guide](#).

Rooflock® Eighteen

Flat roof waterproofing

Page 7

Rooflock Eighteen NoWeld Jointing and Perimeter Tapes (cont)

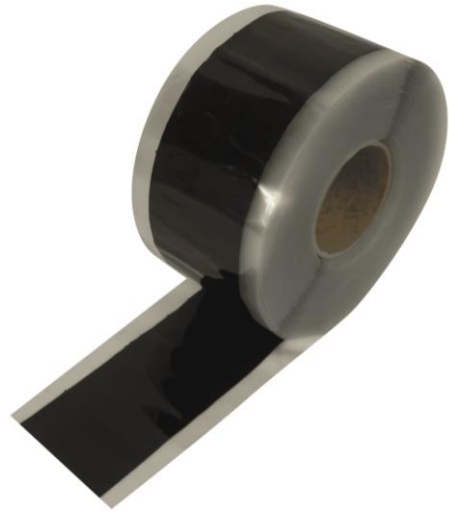
Rooflock Eighteen NoWeld Seam Tape

Rooflock Eighteen NoWeld Seam Tape is a black pressure-sensitive adhesive tape that creates ultra-strong, watertight seams within EPDM roofing systems. Manufactured from vulcanised rubber, this tape is soft and sticky and provides an instant bond to EPDM membrane.

Width: 75mm

Length: 7.5m
30m

Must be used with Rooflock Eighteen NoWeld Surface Activator – see page 8



For in-depth specification details, please consult the [Rooflock Eighteen Design Guide](#).

Rooflock Eighteen NoWeld Flashing Tape

Rooflock Eighteen NoWeld Flashing Tape is a non-cured EPDM membrane, laminated to a high-performance EPDM-based pressure-sensitive adhesive. This tape is extremely flexible and can be moulded into irregular shapes and angles. For use at internal and external corners within both mechanically fixed and adhered specifications.

Width: 225mm

Length: 15m

Must be used with Rooflock Eighteen NoWeld Surface Activator – see page 8



For in-depth specification details, please consult the [Rooflock Eighteen Design Guide](#).

Rooflock® Eighteen

Flat roof waterproofing

Page 8

Rooflock Eighteen NoWeld Jointing and Perimeter Tapes (cont)

Rooflock Eighteen NoWeld Flashing Patch

Rooflock Eighteen NoWeld Flashing Patch is a 225mm diameter non-cured EPDM membrane, laminated to a high-performance EPDM-based pressure-sensitive adhesive.

This patch is extremely flexible and can be moulded into irregular shapes and angles. For use at internal and external corners within both mechanically fixed and adhered specifications.

Diameter: 225mm

Must be used with Rooflock Eighteen NoWeld Surface Activator – see page 8

For in-depth specification details, please consult the [Rooflock Eighteen Design Guide](#).

Rooflock Eighteen NoWeld Perimeter Restraint Tape

Rooflock Eighteen NoWeld Perimeter Restraint Tape consists of a reinforced 150mm width EPDM membrane strip, laminated to 75mm width high-performance EPDM-based pressure-sensitive adhesive.

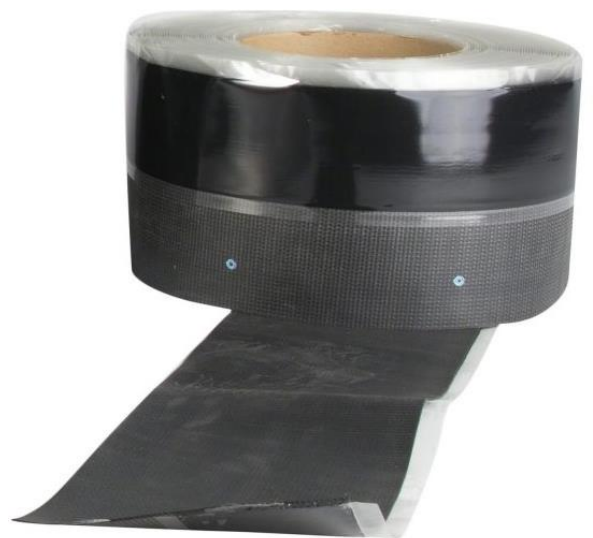
Installed at perimeters using mechanical fixings and the EPDM membrane is bonded to the tape.

Must be attached with Fastec SP 82 x 40 Pressure Plates and appropriate fixings at minimum 400mm centres.

Width: 150mm
Length: 30m

Must be used with Rooflock Eighteen NoWeld Surface Activator – see page 8

For in-depth specification details, please consult the [Rooflock Eighteen Design Guide](#).



Rooflock[®] Eighteen

Flat roof waterproofing

Page 9

Rooflock Eighteen NoWeld Jointing and Perimeter Tapes (cont)

Rooflock Eighteen NoWeld Surface Activator

For use with all Rooflock Eighteen NoWeld products, this Surface Activator gives uniform coverage on horizontal and vertical services.

Must be allowed to dry (generally 2 – 3 minutes) prior to application of the NoWeld material.

For chalky membranes, either a solvent wipe must be used to remove the chalk, or the Surface Activator must be applied with a scrubber pad to lightly abrade the surface of the EPDM.

Typical coverage: 30 sqm per 1 litre tin.

MSDS available upon request.

For in-depth specification details, please consult the [Rooflock Eighteen Design Guide](#).

Rooflock[®] Eighteen

Flat roof waterproofing

Page 10

Rooflock Eighteen NoWeld Rainwater outlets - no tapes required

Designed to save labour and reduce installation times, this innovative rainwater **self-adhesive** outlet bonds directly to a wide range of EPDM roofing membranes in only seconds.

Yields **huge time savings** when compared to conventional EPDM roof outlets with tape.

Also compatible with a wide range of other EPDM membranes – contact Rooflock Technical team for advice.

No hot air welding.
No ambiguity.
No long power cables.

Saves you significant costs.

Huge time savings with self adhesive flange – no extra tapes needed

Very flexible and easy to form into gutter and corner details

Diameters

- 50mm
- 63mm
- 75mm
- 90mm
- 125mm

500mm length polypropylene pipe.

Flange size: 300mm x 300mm

Must be used with Rooflock Eighteen NoWeld Surface Activator – see page 8

For in-depth specification details, please consult the **Rooflock Eighteen Design Guide**.



Rooflock[®] Eighteen

Flat roof waterproofing

Page 11

Fastec Fastener Systems

A complete range of aluminium battens and Part-L compliant fastener systems are available from our Fastec division.

See further details at www.fastecfixings.com/flat-roofing-fastener-systems



Rooflock® Eighteen

Flat roof waterproofing

Page 12

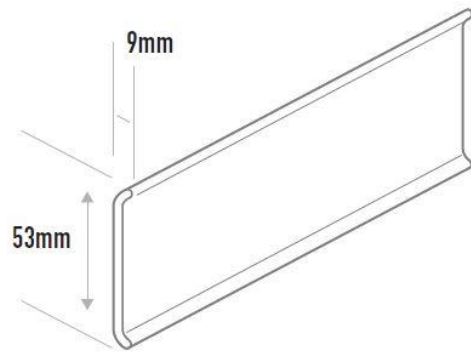
Fastec Termination bars

Termination bars for mechanical restraint of Rooflock Eighteen EPDM on upstands and parapets

Must be attached with appropriate Fastec fixings at minimum 400mm centres. (See page 5)

Top edge must be sealed with a premium grade low modulus silicone sealant.

Width: 53mm
Length: 2.5m



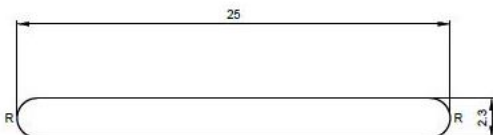
Fastec Aluminium battens for mechanically fixed specifications

Aluminium restraint bars for use within seams for mechanically fixed specifications.

Punched with 7mm diameter holes at 200mm centres.

For use with appropriate Fastec fasteners – see page 5

Width: 25mm
Thickness: 2.3mm
Length: 2m



For in-depth specification details, please consult the [Rooflock Eighteen Design Guide](#).

Rooflock® Eighteen

Flat roof waterproofing

Page 13

Rooflock Eighteen Adhesives

Rooflock Eighteen Spray Contact Adhesive is the fastest and most convenient method of adhering Rooflock Eighteen membranes to insulation, timber, metal and masonry or concrete upstands.

Also available in a 750ml ready-to-use aerosol which is ideally suited for detail areas.

Adhesive must be applied to both surfaces.

Size: 22 litres canister
750ml aerosol

Typical coverage: approx 30sqm per 22 litres canister

MSDS available upon request



Rooflock Eighteen Cleaner

Rooflock Eighteen Solvent based cleaner for removal of surface residue.

Size: 5 litres tin

MSDS available upon request.

For in-depth specification details, please consult the [Rooflock Eighteen Design Guide](#).